

# X3 Series Industrial Videoscope



**Explosion-Proof & HD**  
**Modular Design, User-Friendly**  
**Industrial-Grade Durability**

Supports rapid replacement of multiple lens types to meet diverse inspection needs.

# PRODUCT INTRODUCTION

## High Performance Multifunctional Industrial Videoscope

The X3 series features an HD industrial camera and a 5.5-inch HD touchscreen for clear, true-to-life imaging. A high-frame-rate sensor ensures smooth, blur-free video. Its handheld integrated design with 360° mechanically controlled steering enables easy operation. The quick change tube mechanism supports probes from 0.95mm to 8.0mm, with swaps in under 3 seconds. It also supports interchangeable multi-focal lenses and optional lighting (white, IR, UV, laser). Dual batteries extend runtime, and expandable storage meets diverse inspection needs.



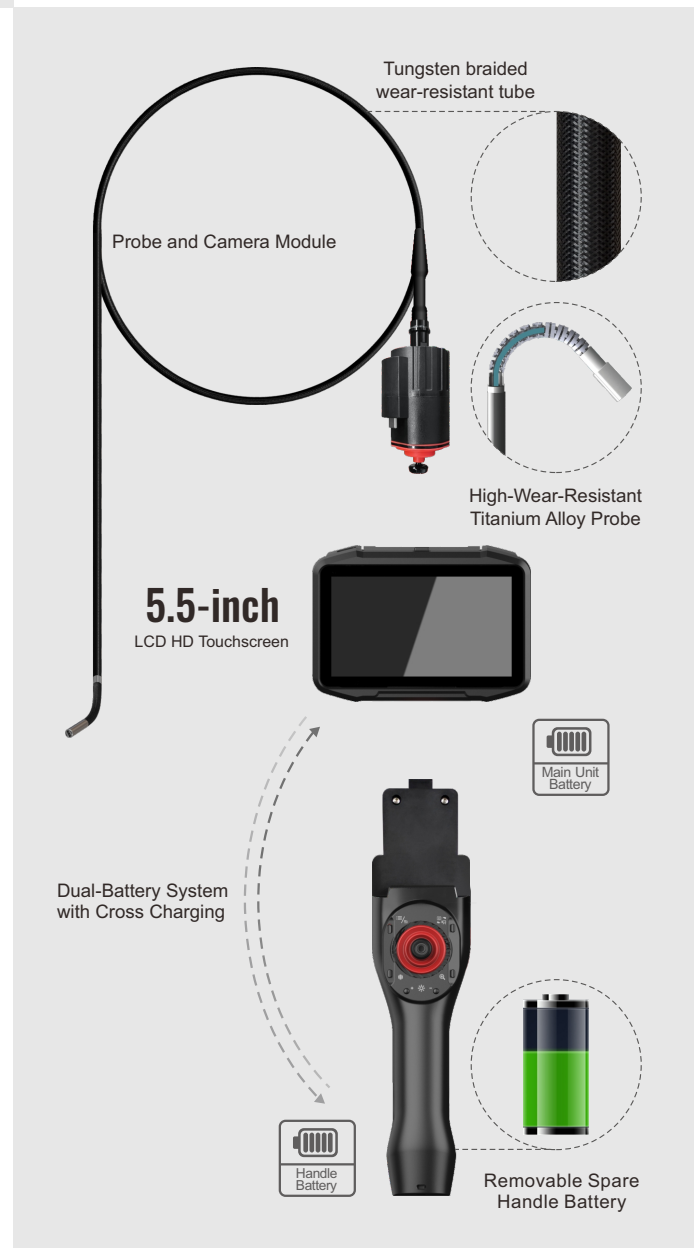
- |                        |                        |                          |
|------------------------|------------------------|--------------------------|
| ① Menu / Return Button | ⑦ Photo / Video Button | ⑬ Power Button           |
| ② Photo/Video Switch   | ⑧ HDMI Port            | ⑭ IR Light               |
| ③ Freeze Button        | ⑨ Charging Port        | ⑮ White Light            |
| ④ Zoom Button          | ⑩ USB 2.0 Port         | ⑯ Display Removal Button |
| ⑤ LED+ Button          | ⑪ USB 2.0 Port         | ⑰ Probe Locking Ring     |
| ⑥ LED- Button          | ⑫ Joystick             |                          |

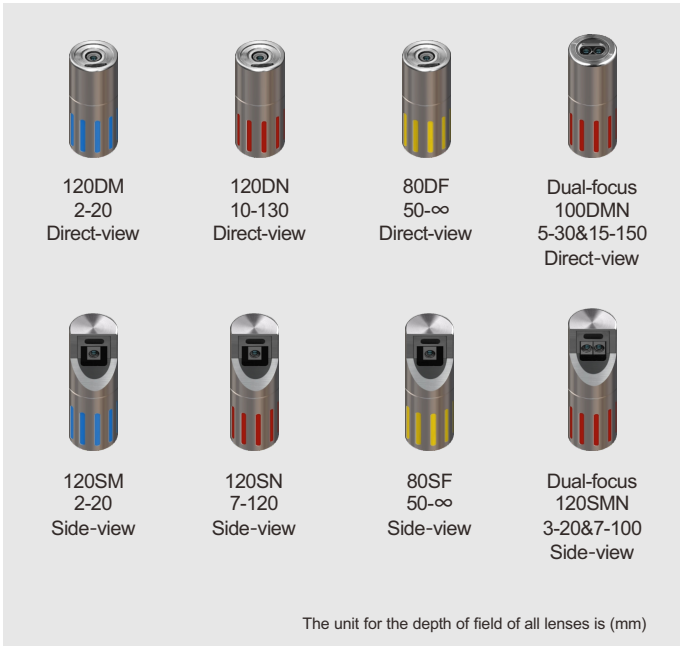




## Modular Flexible Design, Premium User Experience / 03

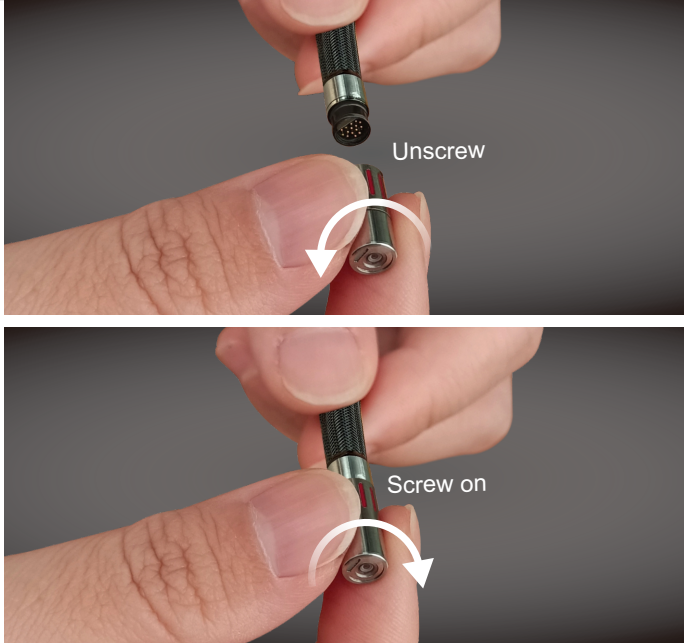
- Detachable Touch Display Screen
- Mechanical joystick control for 360° probe articulation.
- Handheld Integrated Ergonomic Design
- Dual Battery Supply System for Extended Battery Life
- Unique Dual-Thread Lens Connection Structure
- Quick-Release Handle Battery
- Large-Capacity Storage (Built-in 16G, Expandable up to 128G)



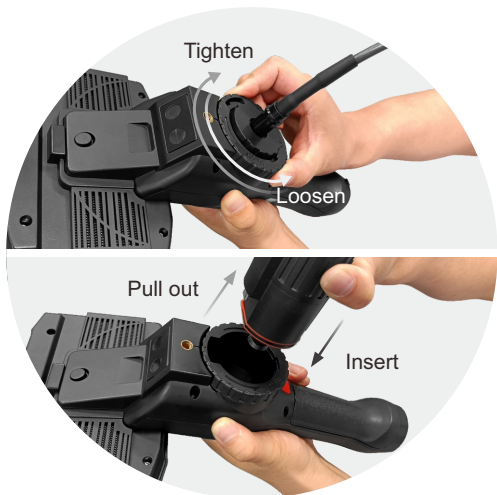


## Proprietary Patent · Tube Quick-Change Technology (Seconds) /04

- Interchangeable Lenses: Direct/side view, macro, Near-focus, wide-angle, medium-focus, telephoto.
- One Host Adapts to Multiple Insertion Tubes: Various lengths, diameters, and lighting methods.
- Buckle and Interference Fit Design: Enables 3-second rapid tube change – Quick-Release + Flexible + Efficient + Cost-Saving.



φ0.95mm	L: 1-2m	DOF: 3-50mm	FOV: 120°
φ1.2mm	L: 1-2m	DOF: 5-50mm	FOV: 120°
φ1.6mm	L: 1-3m	DOF: 5-50mm	FOV: 120°
φ1.8mm	L: 1-3m	DOF: 5-50mm	FOV: 120°
φ2.0mm	L: 1-3m	DOF: 5-50mm	FOV: 120°
φ2.8mm	L: 1-3m	DOF: 5-50mm	FOV: 120°
φ3.0mm	L: 1-1.5m	DOF: 3-50mm	FOV: 130°
φ3.9mm	L: 1-3m	DOF: 3-100mm	FOV: 120°
φ4.8mm	L: 1-3m	DOF: 10-100mm	FOV: 100°
φ6.0mm	L: 1-10m	DOF: 8-80/10-100/15-130/15-∞(mm)	FOV: 100°/105°/120°
φ8.0mm	L: 1-10m	DOF: 8-80/10-100/15-130/15-∞(mm)	FOV: 100°/105°/120°



For detailed specifications and additional requirements, please consult our sales representatives.

# SPECIFICATION PARAMETERS

High Performance Multifunctional  
Industrial Videoscope

● Standard ○ Optional

Host system	
Display Type	LCD Touch Screen
Display Size	5.5-inch
Resolution	1280 * 720
Removable Design	●
User Interface	Touch screen & physical button navigation
Standard Host Storage	16G
Expandable Memory Capacity	○
Photo Function	●
Image Storage Format	JPEG / BMP
Video Recording Function	●
Video Storage Format	MP4
Live Image Magnification	1-5 times (supports multi-touch pinch-to-zoom gesture)
LED Brightness Levels	Adjustable, 0-9 level
Image Quality Adjustment	Adjust image brightness, contrast, hue, saturation, sharpness, gamma & restore defaults
Image Color Adjustment	Optional: Color, Black & White, Negative
Manual Display Brightness Adjustment	●
Image Rotation	●
Screen Freeze	●
Mirroring	●
Real-time Image Comparison	●
Time Watermark	●
Location Watermark	●
Custom Report Generation	●
Ruler/Scale	Optional modes: None, Circular Scale, Cross Scale, Reference Lines, etc.
WiFi (Optional/Removable)	●
Video Streaming	●
File Management	Set storage path / Create / Rename folders / Full-screen view / Zoom image / Delete
Image Zoom	Rename / View details / Share / Move image or video files, etc.
	Up to 5x zoom (supports multi-touch pinch-to-zoom gesture)
Image Editing	Text annotation, doodle function (supports handwritten lines/arrows/rectangles/circles/text
	notes, adjustable pen color/thickness)
User Permission Management	Administrator, Guest, Standard User
Language Support	Simplified Chinese, Traditional Chinese, English, Japanese, Korean, French, German,
	Portuguese, Spanish, Russian, Italian, Dutch, etc, more than ten languages.
Host Protection (Water & Dust)	IP55
Probe Protection (Water & Dust)	IP68

Power Supply Parameters	
Power Input	220± 10%V 50Hz

Power Supply Parameters	
Output	DC12V 4A
Host Battery Capacity	3000mAh 7.4V
Handle Battery Capacity	3200mAh 7.4V
Host Continuous Operating Time	Front LED version: 6h, Fiber version: 3h

Output Ports	
HDMI Video Output Port	●
3.5mm Audio Output	○
USB 2.0 Port	2
DC Charging Port	●

Dimensions & Specifications	
Host Dimensions	295mm*145mm*163mm
Case Dimensions	480mm*428mm*200mm
Host Weight (incl. battery)	≤1.5kg

Tube System	
Probe Diameter (±0.1mm)	0.95mm / 1.2mm / 1.6mm / 1.8mm / 2.0mm / 2.8mm / 3.0mm / 3.9mm / 4.8mm / 6.0mm / 8.0mm
Tube Length	1m ~ 10m optional
Depth of Field(mm)	3-50 / 3-100 / 5-50 / 5-100 / 7-150 / 8-80 / 10-100 / 15-100 / 15-150 / 50-200
Field of View	70° / 80° / 85° / 90° / 92° / 95° / 100° / 105° / 120° / 140°
Camera Pixel	160K / 500K / 1MP / 2MP
Interchangeable Lens	Supports 4mm, 6mm, and 8mm tubes only
Viewing Direction	Direct / Side / Dual Camera
Lighting Method	Front LED / optical fiber light guide / Laser Fiber + backend LED
Light Source	White light / Infrared / UV light
Probe Steering Control	Mechanical 360° all-way articulation
Probe Unidirectional Bend Angle	0° - 210°
Probe Material	Highly wear-resistant titanium alloy
Insertion Tube Material	4-layer tungsten braided wear-resistant tube
Embedded Camera (Optional)	7MP HD pixel or customized

Operating Environment	
Full Unit Operating Temperature	-20°C-60°C
Probe Operating Temperature	-25°C-100°C
Storage Temperature	-40°C-60°C
Relative Humidity	≤95%RH, non-condensing

Accessories	
Standard Accessories	Dedicated instrument case
	32GB USB drive
	Power adapter
Also includes: host stand, charging cable, user manual, lint-free cloth, usage precautions.	
Optional Accessories	Pipe centering tool: Centralizer on wheels /Handheld Rigid Sleeve / Centering Devices
	HDMI cable
	Battery pack

Customization	
Custom tube material, length, diameter, lighting method per requirements	○
Add ruler scale markings to tube	○
Lens customization	○
Software customization	○
*For specific parameters (such as illumination, depth of field, pixel, field of view, working length, bending angle, etc.) and other requirements, please contact relevant personnel for confirmation.	

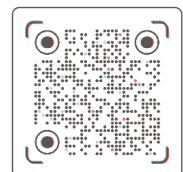
## COANTEC LTD

Floor 4, Block B, Building 5, Hengmingwan Chuanghui Center, Longping West Road, Longcheng Street, Longgang District, Shenzhen, China 518172

Tel: +86-755-89728626    Email: [coantec@126.com](mailto:coantec@126.com)    Web: [www.coantecndt.com](http://www.coantecndt.com)



Website



TikTok