

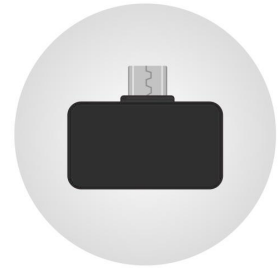
C-Z5

Mini Infrared Thermal Imaging Camera

The C-Z5 Series Mini Infrared Thermal Imaging Camera can be directly connected to a smartphone via Type-C port, displaying infrared thermal radiation images in real-time and measuring temperature in real-time. Users can customize the heating alarm temperature as needed, with no external power required. With a long-lasting battery life, it is suitable for home floor heating inspection, circuit maintenance/inspection, equipment patrol, and observing and searching for heated objects.

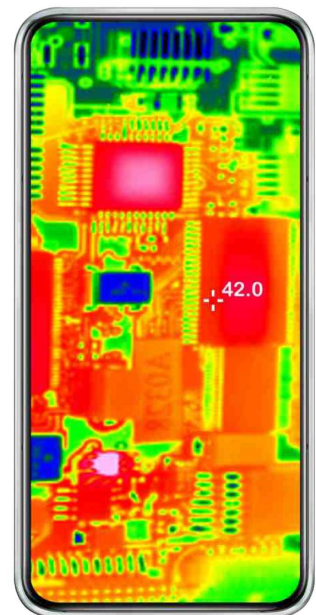


The front



The back

- Clear and smooth images
- High thermal sensitivity
- High performance, more economical and reliable
- Connect to the mobile directly, plug and play
- Real-time accurate temperature measurement
- Customizable high-temperature alarm settings
- Compact and portable, easy to carry



➤ Super high performance

The system displays infrared thermal images in real-time via a smartphone, enabling non-contact temperature measurement unaffected by ambient light. By monitoring temperature anomalies, hidden problems can be assessed quickly. It can generate temperature images and reports for offline temperature analysis.

➤ Customizable temperature and alarm settings

High- and low-temperature alarm values can be defined. If the set temperature is exceeded, corresponding alarm notifications will be issued, facilitating timely handling of abnormal conditions.

➤ Precise imaging, rich details

The high-precision infrared thermal image sensor with a resolution of 256x192 delivers clear and smooth images that present richer detail in thermal infrared images.

➤ Smart temperature measurement with a wider range of temperature

The system features a high thermal sensitivity, enabling real-time accurate display of the observed object's temperature, with point, line, and plane measurement functions. Products with different temperature measurement ranges can be selected based on actual needs.

Multiple application scenarios

The system can be applied in various scenarios such as industrial equipment spot inspection, routing inspection and maintenance, circuit research, professional home plumbing, appliance self-checks, privacy protection, floor

heating inspection, outdoor exploration, animal tracking, and monitoring of farms, offering wide applications and convenient, effortless portability.

Basic parameters

Host System	
Weight	Approximately 10g
Dimensions	35*26*8.5 (mm)
Ports	Type-C
Resolution	256*192
Pixel size	12um
NETD	≤50mK@25°C, F#1.0
Operating wavelength	8~14um
Frame rate	25Hz
Operating temperature	-10°C~ 55°C
Storage temperature	-40°C ~85°C
Typical power consumption	350mw
Processor	Falcon ASIC chip

Lens	
Focal length	3.2mm
Aperture	F1.1
Field of view	56.0° (H)x42.2°(V), 71.3° (D)
Focusing	Non-thermal fixed-focus lens

Temperature measurement performance	
Temperature measurement range	-15°C ~550°C
Measurement error	±3°C or ±3% of reading (whichever is greater)
Temperature correction	Distance, ambient temperature, emissivity

Shell	
Dimensions	35*26*8.5 (mm)
Color	Black
Weight	Approximately 10g
Product port	USB type-C

Software features	
Faux color	White/black heat + 3 types of faux color
Temperature measurement method	Point, line, plane temperature measurement
Output tools	Mainstream smartphones with Android 6.0 and above
Software update	Online update

Packaging accessories	
Packaging color	Black
Package dimensions	135*105*48 (mm)
Accessories	C-25 Infrared Thermal Imaging Camera, Quick Start Guide, Storage Bag, Dedicated Cleaning Cloth.

