

**C65** series

## 3D Measurement High Definition Industrial Videoscope



- 6.5-inch HD Touch Screen
- HD Industrial Camera
- Accurate 3D Measurement Function
- Replaceable Insertion Tube System
- 360°All-way Articulation Probe
- Rear-mounted LED Optical Fiber Light Guide
- C Gesture Image Auto Flip Function
- Image File Processing Function



## Product Introduction

The C65 series is a high-definition industrial video endoscope that can be used for 3D measurement after years of careful research and development by Coantec. The product uses a 6.5-inch high-definition touch screen, 720P high-definition industrial camera, and excellent image sensing technology, which comprehensively improves the clarity of the image, restores the color of the measured object to a greater extent. It can realize the precise measurement functions of point-to-point, point-to-line, point-to-surface, depth, and area, and took the lead in breaking the long-term foreign monopoly on this technology. The joystick uses a single-touch electric control method, which greatly improves the positioning ability of the probe. It can be used in many fields such as aerospace, automobile manufacturing, precision casting, railway, shipbuilding, energy, electricity and so on.



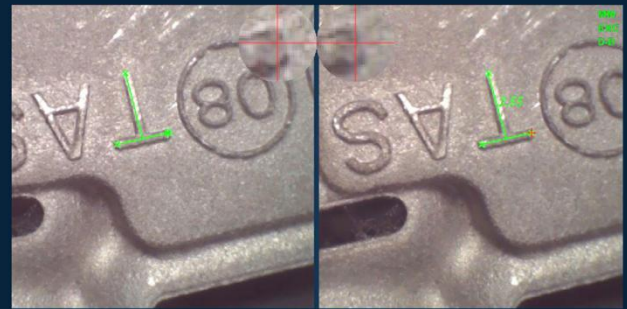
## Product Introduction

### 3D Measurement Function

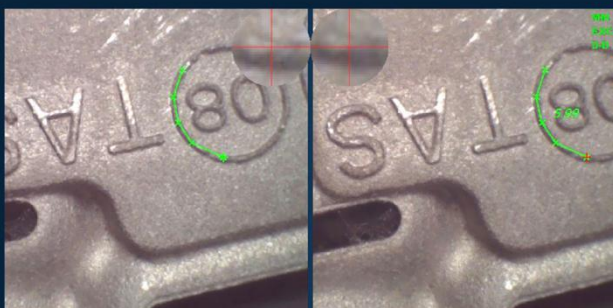
The user can measure the appearance size of the object in many ways, such as point-to-point, point-to-line, point-to-surface, multi-line segment, and area. The measurement resolution is 0.01mm and the measurement error is less than 5%.



**Point-to-point Measurement**



**Point-to-line Measurement**



**Multi-line Measurement**



**Area Measurement**

## Product Introduction

### High Quality Image

It adopts 6.5-inch high-definition touch screen, megapixel high-definition industrial camera and high color reproduction, which makes the image quality clear and delicate, effectively observing the subtle defects inside the object.



Real shots of aircraft engine impeller inspection

### 360° All-way Articulation Probe

The probe is made of alloy material, 360° all-way articulation, dustproof and waterproof grade up to IP67, strong corrosion resistance, more wear-resistant, custom-made oil-proof series, suitable for more severe testing environments.



The probe can be bent in any direction at 360°



Waterproof grade

**IP67**

The oil-proof tube can be specially customized for the detection of wind power gearboxes and power equipment.

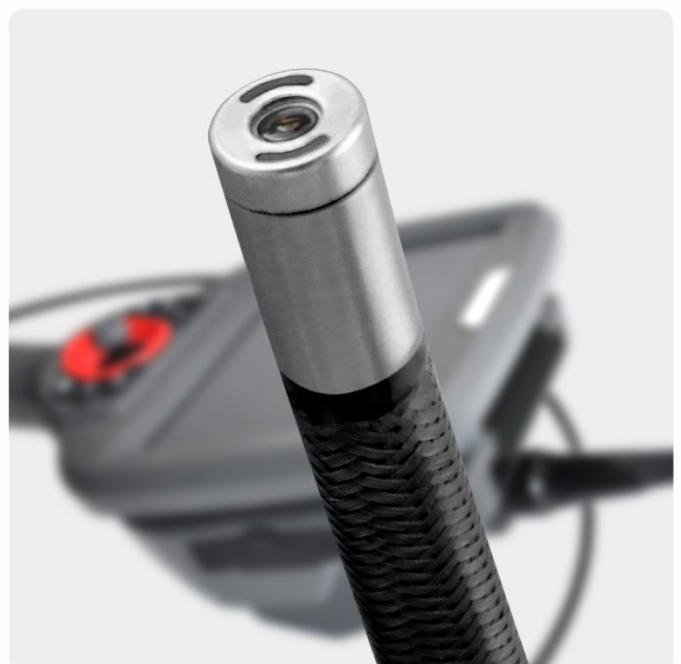
### Replaceable Insertion Tube System

Users can quickly replace insertion tubes of different diameters, lengths and depths of field according to the situation, realizing multiple functions in one machine and meeting more field needs.



### Rear-mounted LED Optical Fiber Light Guide

The use of rear-mounted LED optical fiber light guide lighting has higher brightness and better sealing performance, which effectively extends the service life of the probe.





## Super performance

### C Gesture Image Auto Flip Function

Equipped with G-sensor, the picture can be automatically flipped through the C gesture, so that the image is always at the best viewing angle of the inspector.



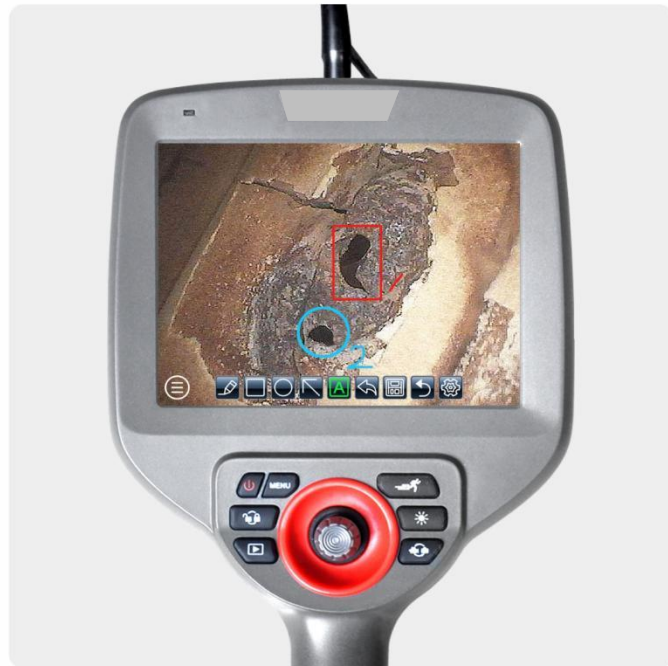
### Easy Operation, Improved Efficiency

Adopting a new humanized user interface design, more tactile physical buttons and sensitive touch buttons, with a zero-delay electric control joystick, which makes it smooth movement, precise positioning, labor-saving operation, and effectively improve detection efficiency.



### Image File Processing Function

Users can zoom in, zoom out, restore, delete, rename files, add watermarks, do graffiti and other operations on the picture. In the graffiti interface, you can set the brush and character format, add text and graphic notes.



### Lightweight, Portable and Durable

The host adopts a lighter design and is equipped with a quick-release special shoulder strap, which is more convenient to carry and operate, and fully reduces the burden on the inspectors. The ergonomically designed handle is easy to hold and manipulate. Equipped with a dedicated instrument case, shockproof and impact resistant, more robust and durable.



## System Parameters

<b>Host</b>	
Display	6.5-inch HD Touch Screen
Display Resolution	1024*768
User Interface	Menu navigation by using touch screen, physical keys and joystick
Image Zoom	Support real-time 5 times zoom, 8 times zoom when playback
LED Brightness Level	0-9 level adjustment
Screen Backlight Brightness	Adjustable
Photo/Video Function	With photo and video functions, can be captured during recording
File Format	Image:JPEG/BMP;Video:MP4
Image Flip	0°/90°/180°/270°
Image Preview	List preview, full-screen viewing/deleting files/adding time watermark
C Gesture Function	With C gesture image automatic flip function
Real-time Noise Reduction	Real-time noise reduction function to improve image quality
Text Annotation	Full screen text, graffiti overlay
Graphic Annotation	Arrow, box, circle mark
Memory	Standard 32G TF Card

<b>Tube</b>	
Handle Style	Electric handle/mechanical handle
Tube Material	Tungsten alloy wire wear-resistant braided tube
Probe Diameter(±0.1mm)	Φ2.0                      Φ2.8                      Φ3.9                      Φ4.8/Φ6/Φ8
Camera Pixels	160,000                      1,000,000                      1,000,000
Depth of Field	5-50mm                      5-100mm                      8-80mm
Field of View	120°                      120°                      85°
Tube Length	1-1.5m                      1-3m                      1-3m                      1-10m
Lighting Mode	Rear-mounted LED,optical fiber light guiding

<b>Power</b>	
Power Supply	DC:15V,Special lithium battery pack, support online charging
Battery	11.1V,3200mAh
System Operating Time	≥4H

<b>Operation Environment</b>	
Machine Operating Temperature	-10℃-50℃
Probe Operating Temperature	-20℃-60℃
Storage Temperature	-20℃-60℃
Relative Humidity	15%-90%

<b>Configurations</b>	
Standard Configurations	C60 videoscope x1,instrument case (Electric type with high - grade instrument case, with insert tube storage tray) x1, lithium battery x2, power adapter x1, battery charger x1, 8G SD card x1, card reader x1, user manualx1,precautions for use x1
Optional Configurations	HDMI cable, Hand-held casing,High-grade instrument case (with insert tube storage tray),